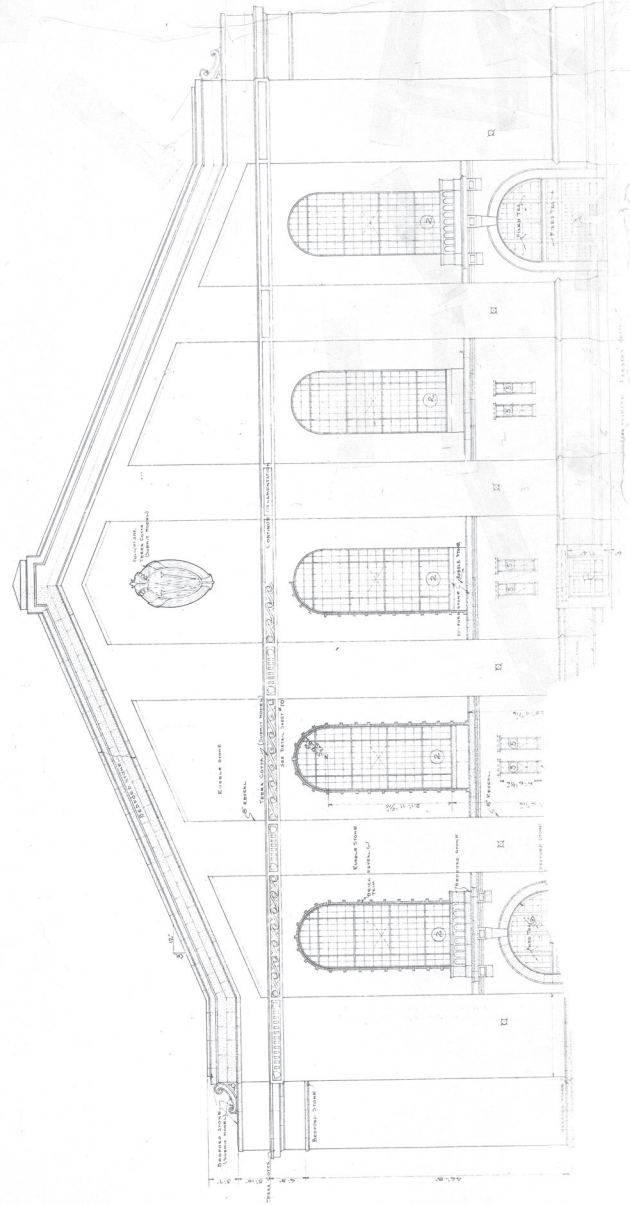
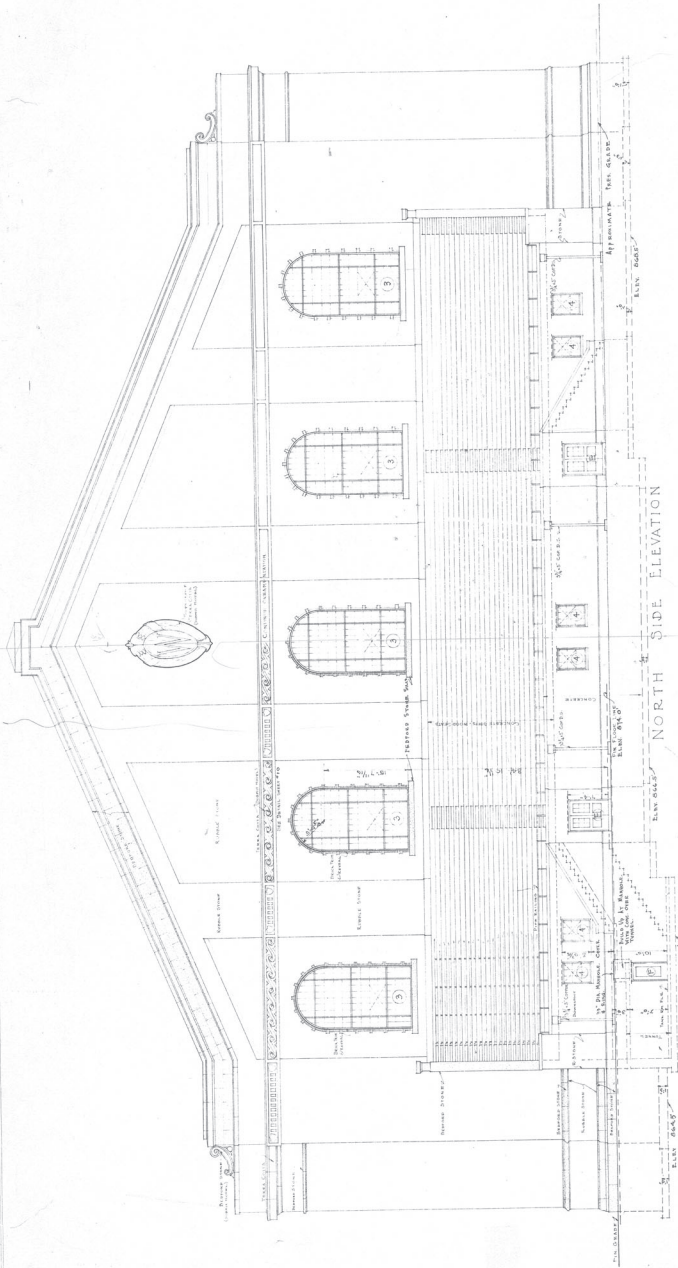
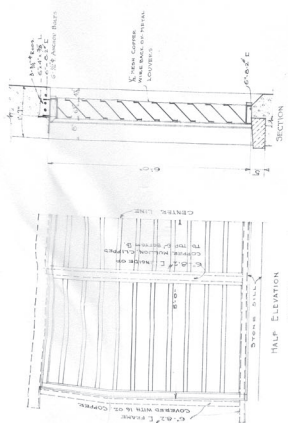


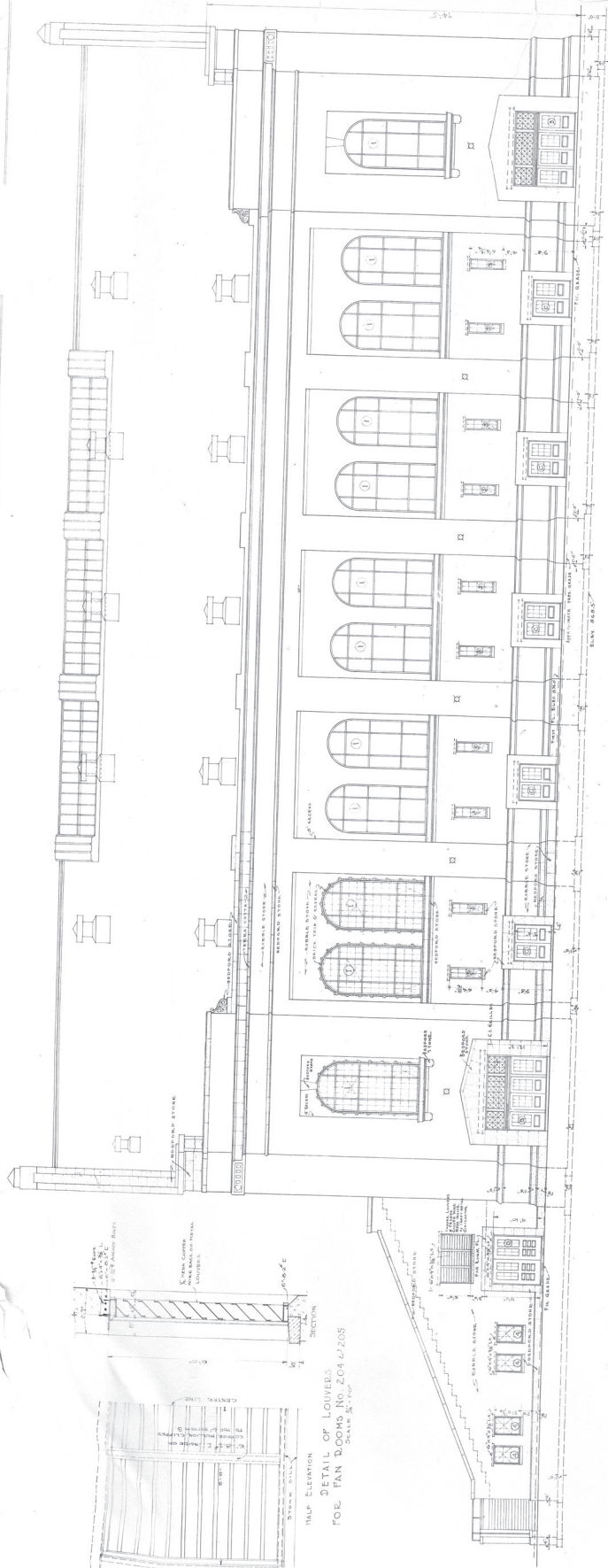
Appendix C

Construction Drawings - 1929

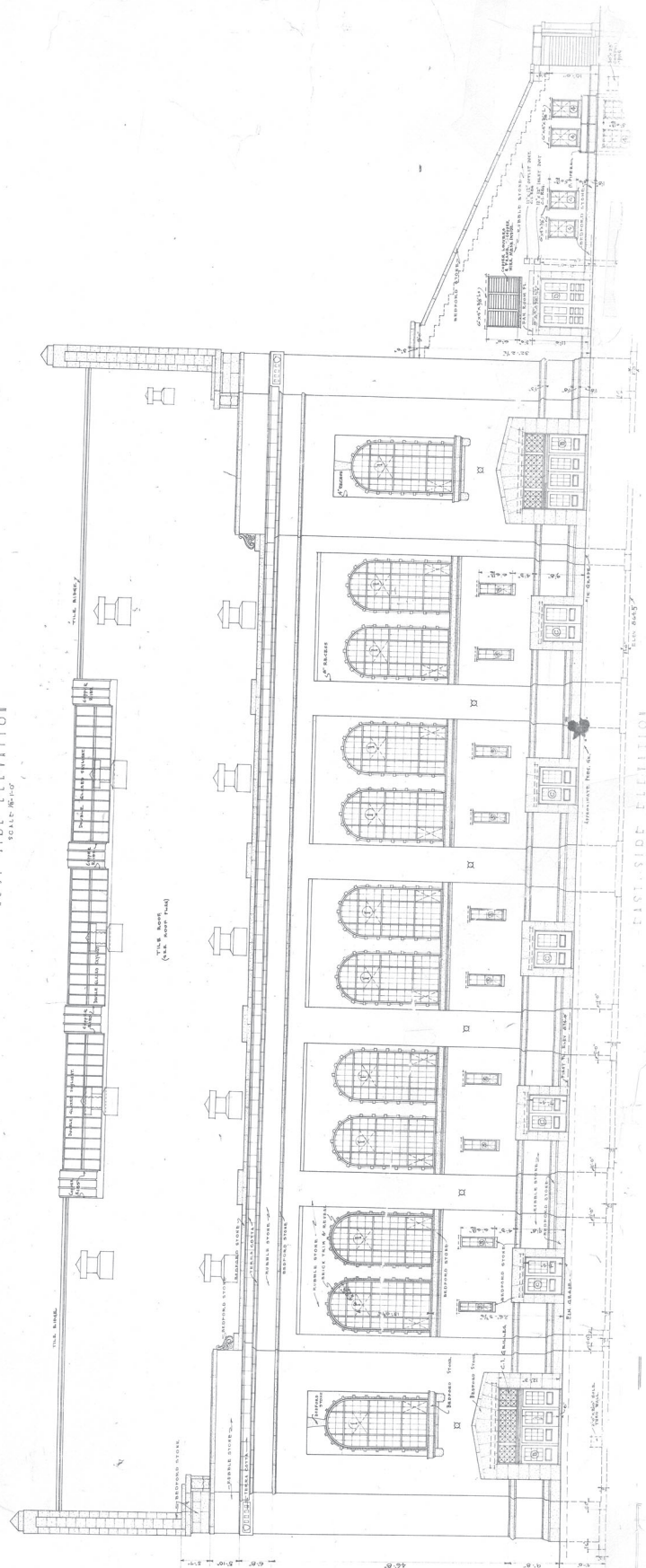




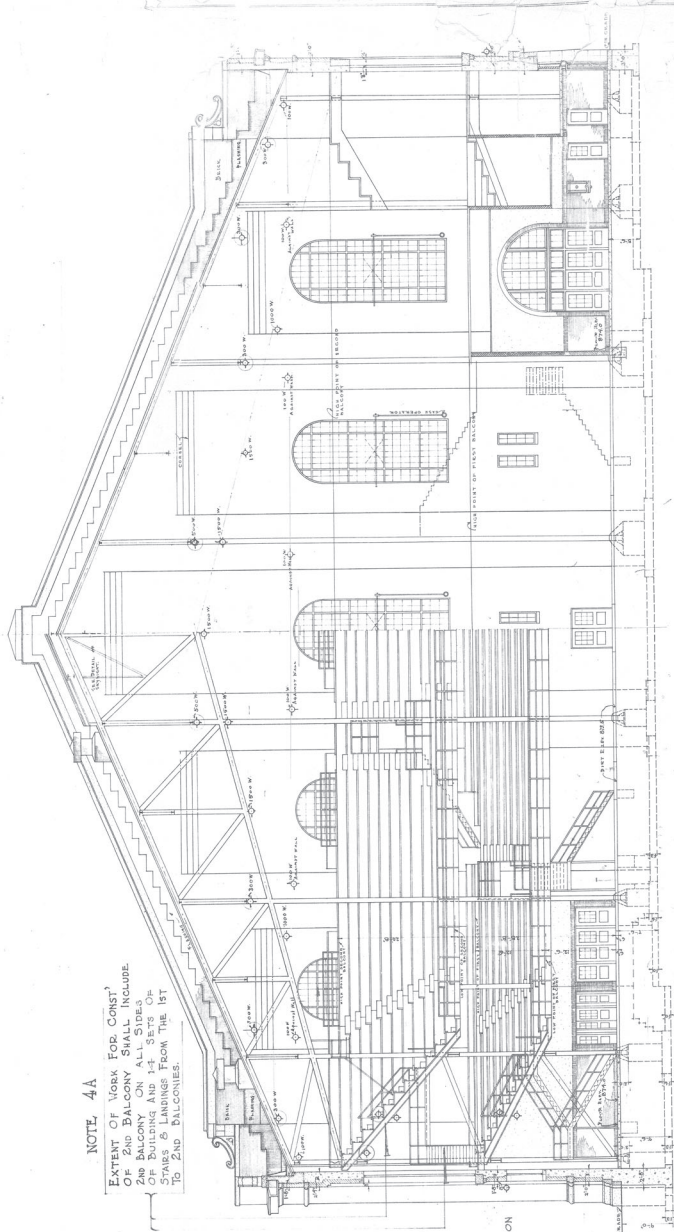
HALF ELEVATION
DETAIL OF LOUVERS
FOR FAN ROOMS No. 204 & 205
SCALE 1/4" = 1'-0"



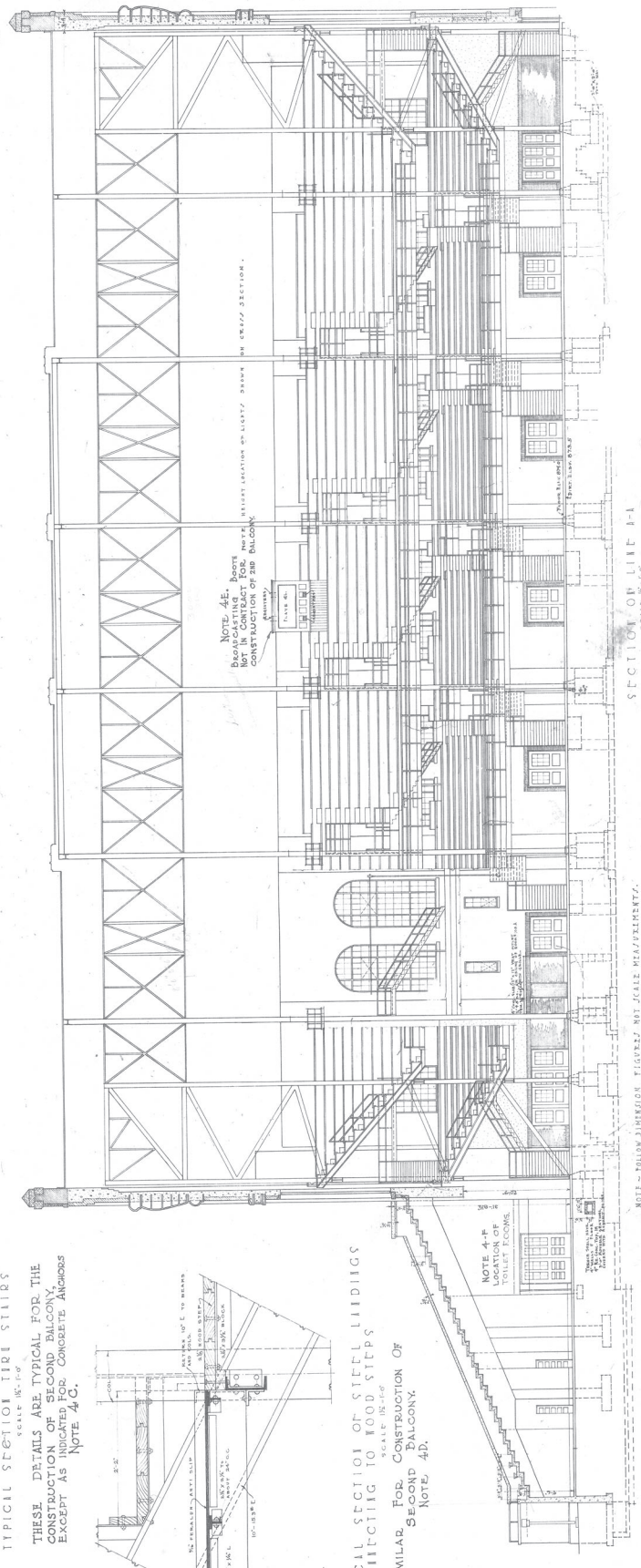
WEST SIDE ELEVATION
SCALE 1/4" = 1'-0"



EAST SIDE ELEVATION
SCALE 1/4" = 1'-0"



SECTION OF LIFT D-D
SCALE 1/8" = 1'-0"



SECTION OF LIFT A-A
SCALE 1/8" = 1'-0"

FIELD POINT
UNIVERSITY OF CALIFORNIA
ARCHITECTURAL DEPARTMENT

NOTE - FOLLOW DIMENSION FIGURES NOT SCALE MEASUREMENTS.

NOTE 4A

EXTENT OF WORK FOR CONSTRUCTION OF 2ND BALCONY SHALL INCLUDE: 1. REMOVAL OF EXISTING 1ST FLOOR OF BUILDING AND 1-2 SETS OF STAIRS & LANDINGS FROM THE 1ST TO 2ND FLOORS.

DETAIL OF IRONING ROD FOR LINDINGS
SCALE 1/8" = 1'-0"
SIMILAR FOR CONSTRUCTION OF 2ND BALCONY
NOTE 4E.

TYPICAL SECTION THRU STAIRS
SCALE 1/8" = 1'-0"

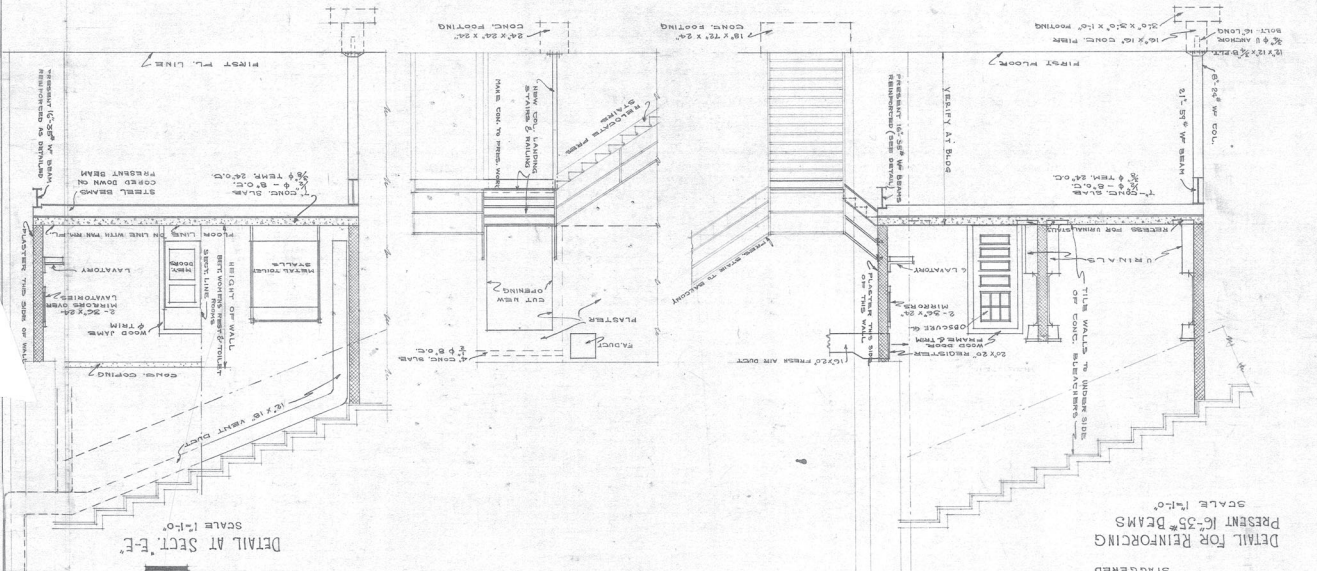
THESE DETAILS ARE TYPICAL FOR THE CONSTRUCTION OF SECOND BALCONY, EXCEPT AS INDICATED FOR CONCRETE ANCHORS
NOTE 4C.

TYPICAL SECTION OF STEEL LINDINGS CONNECTING TO WOOD STAIRS
SCALE 1/8" = 1'-0"
SIMILAR FOR CONSTRUCTION OF SECOND BALCONY.
NOTE 4D.

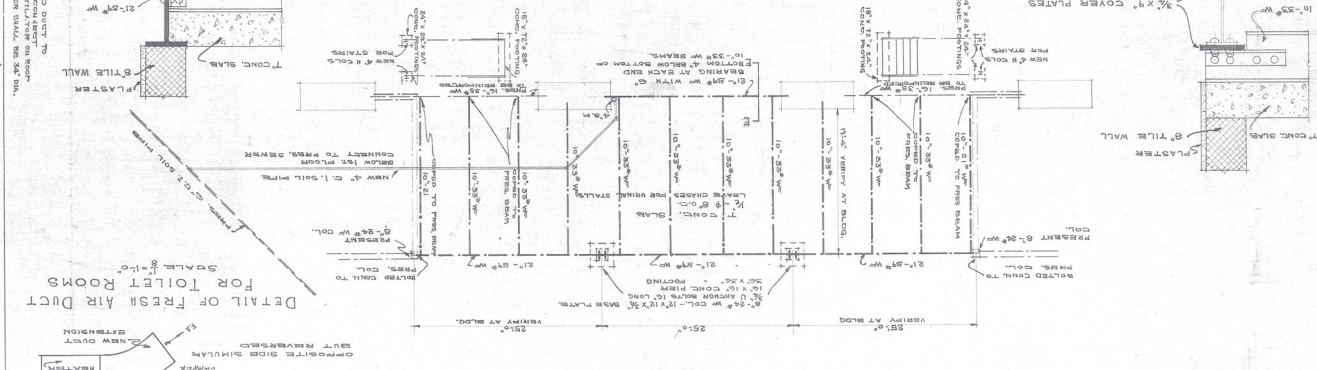
NOTE 4-F
LOCATION OF
VOLUNTARY FLOOR

DAVID H. HARRIS
DAVID H. HARRIS
DAVID H. HARRIS

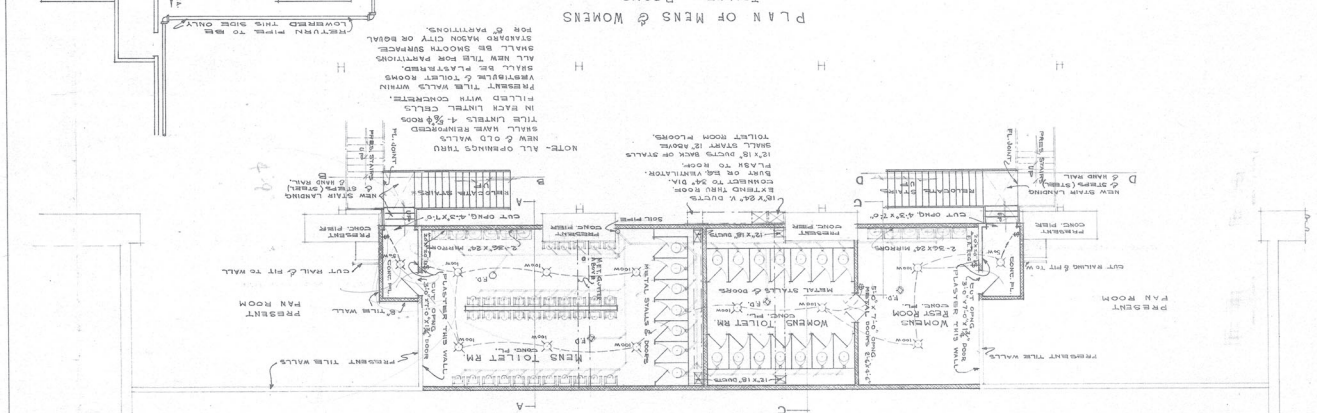
SECTION ON LINE A-A
 SECTION ON LINE B-B
 SECTION ON LINE C-C



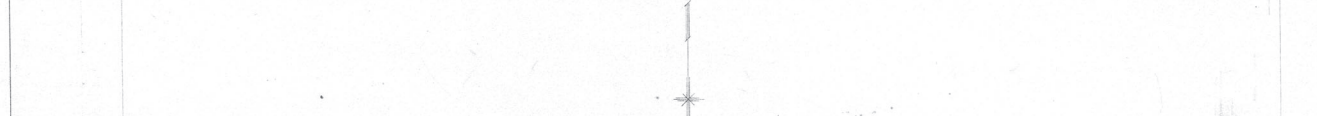
FOOTING & FRAMING PLAN
 SCALE 1/8" = 1'-0"



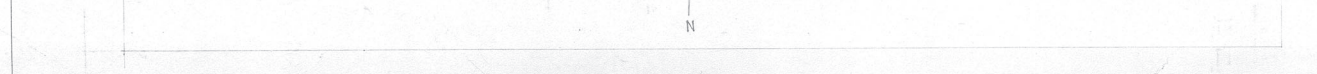
PLAN OF MEN'S & WOMEN'S TOILET ROOMS
 SCALE 1/8" = 1'-0"



DETAIL OF FRESH AIR DUCT FOR TOILET ROOMS
 SCALE 1/8" = 1'-0"



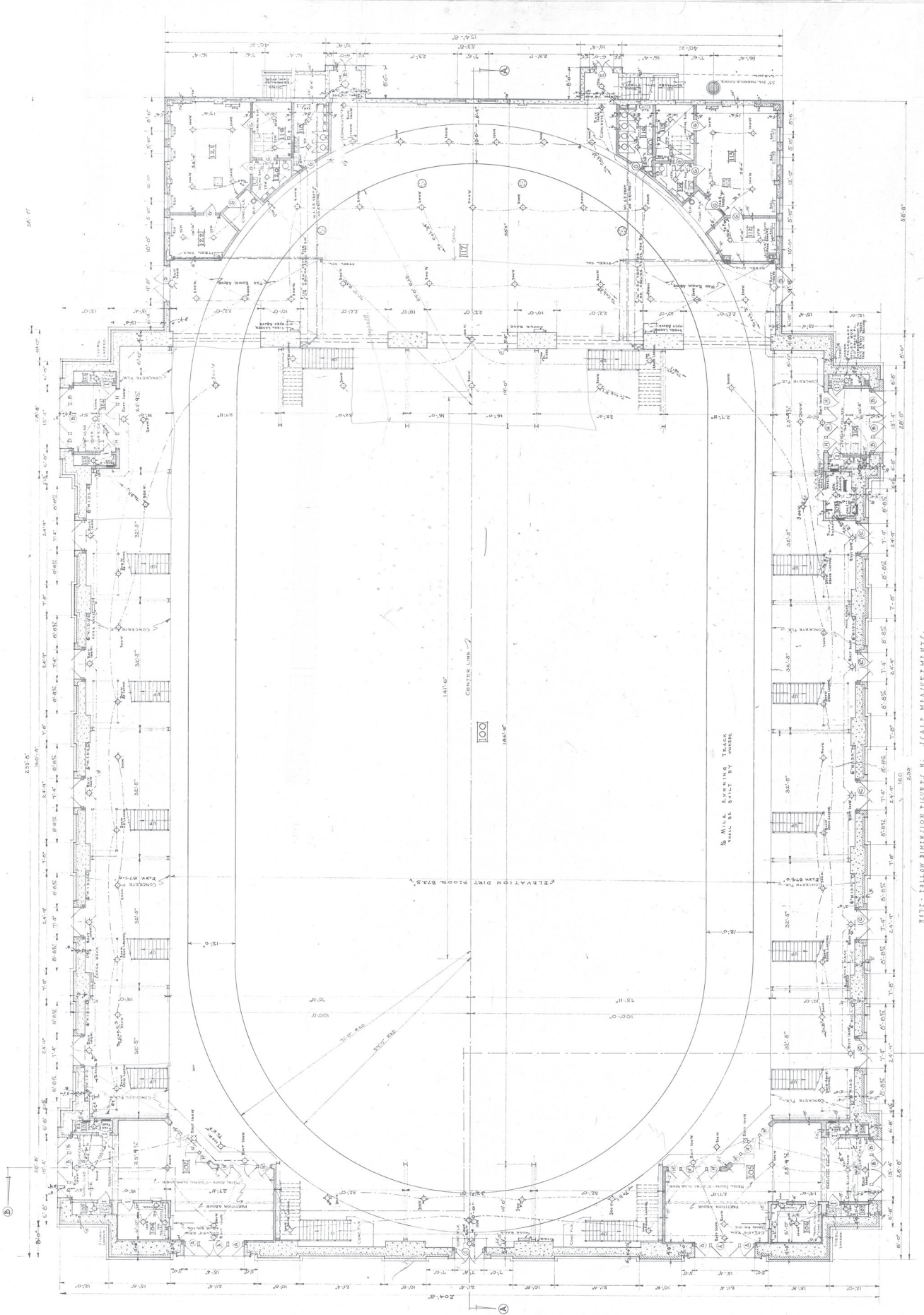
DETAIL AT SECT. E-E
 SCALE 1/8" = 1'-0"





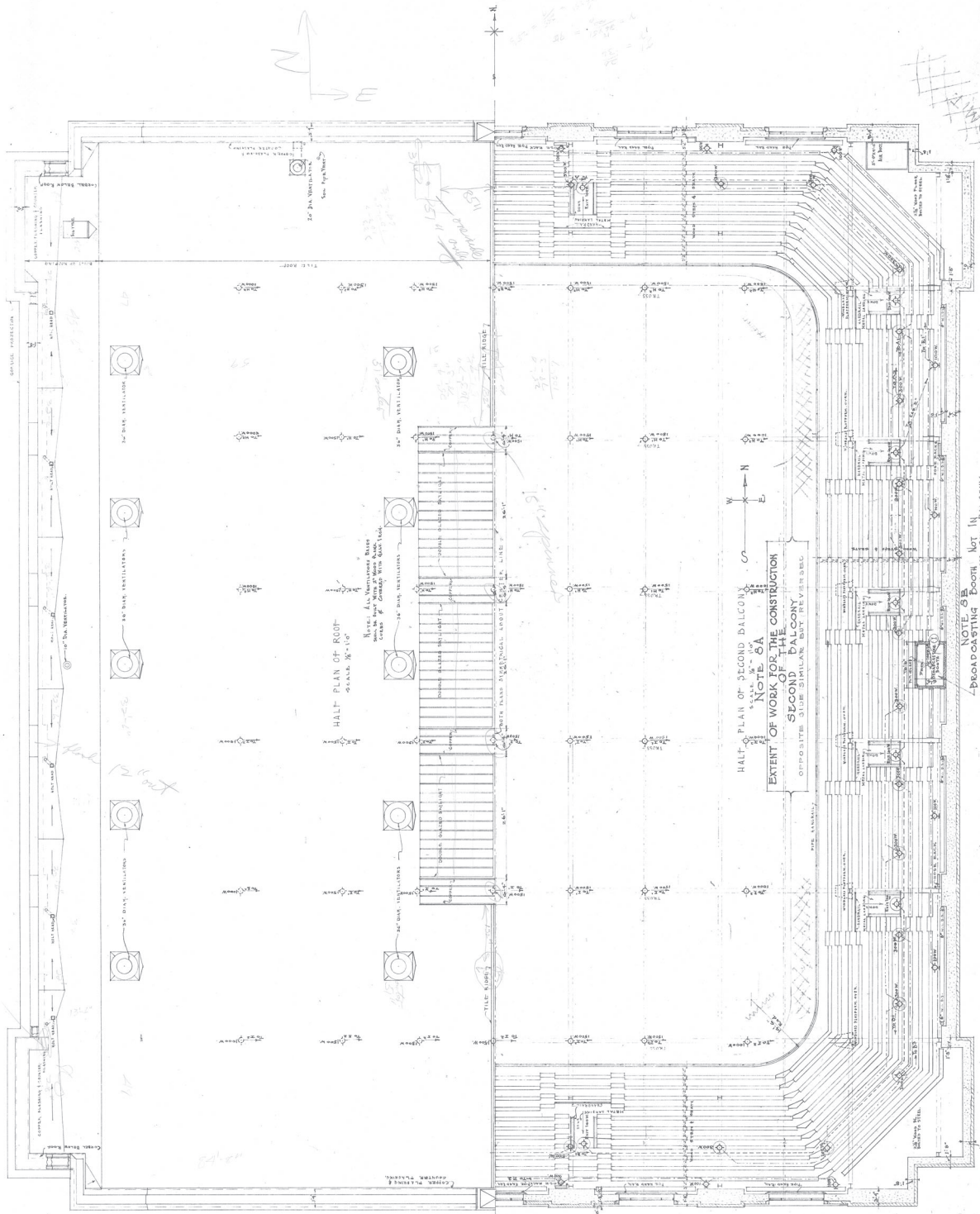
FIELD HOUSE.
UNIVERSITY OF MICHIGAN
LIBRARY

DRAWN BY W. F. VERNER
TRACED MRS. ROSEY CORNELIUS
BY John J. Nelson



NOTE: FOLLOW DIMENSION FIGURES IN SCALE MEASUREMENTS.

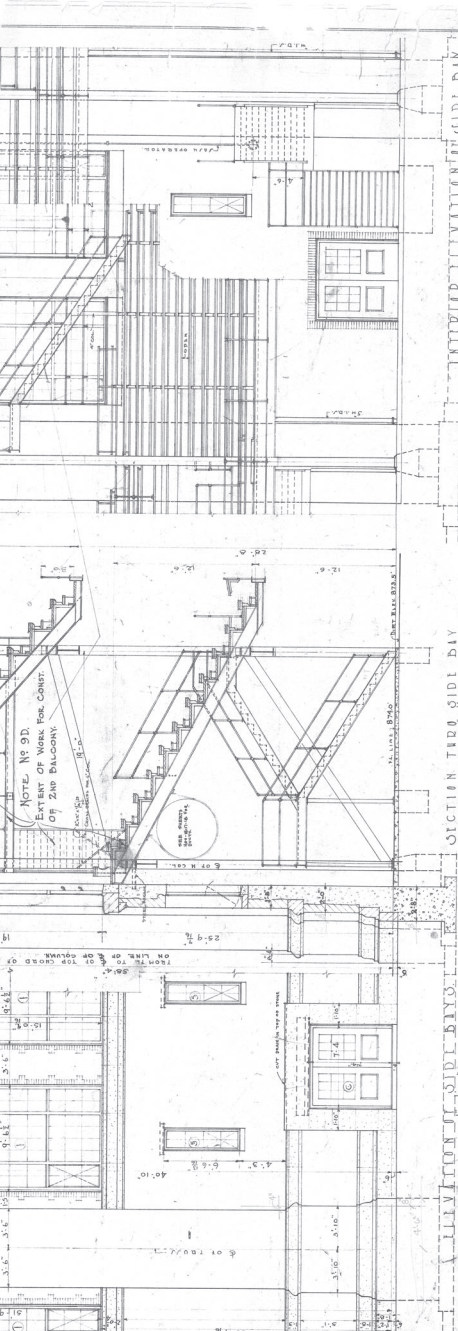
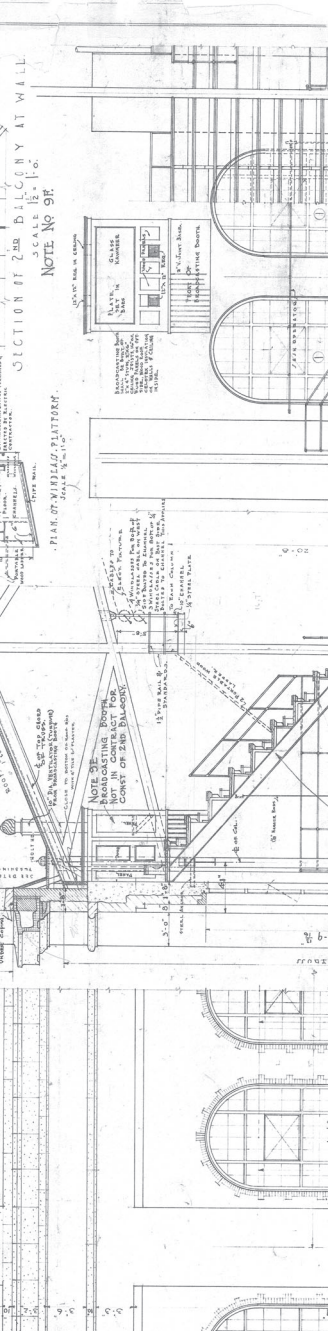
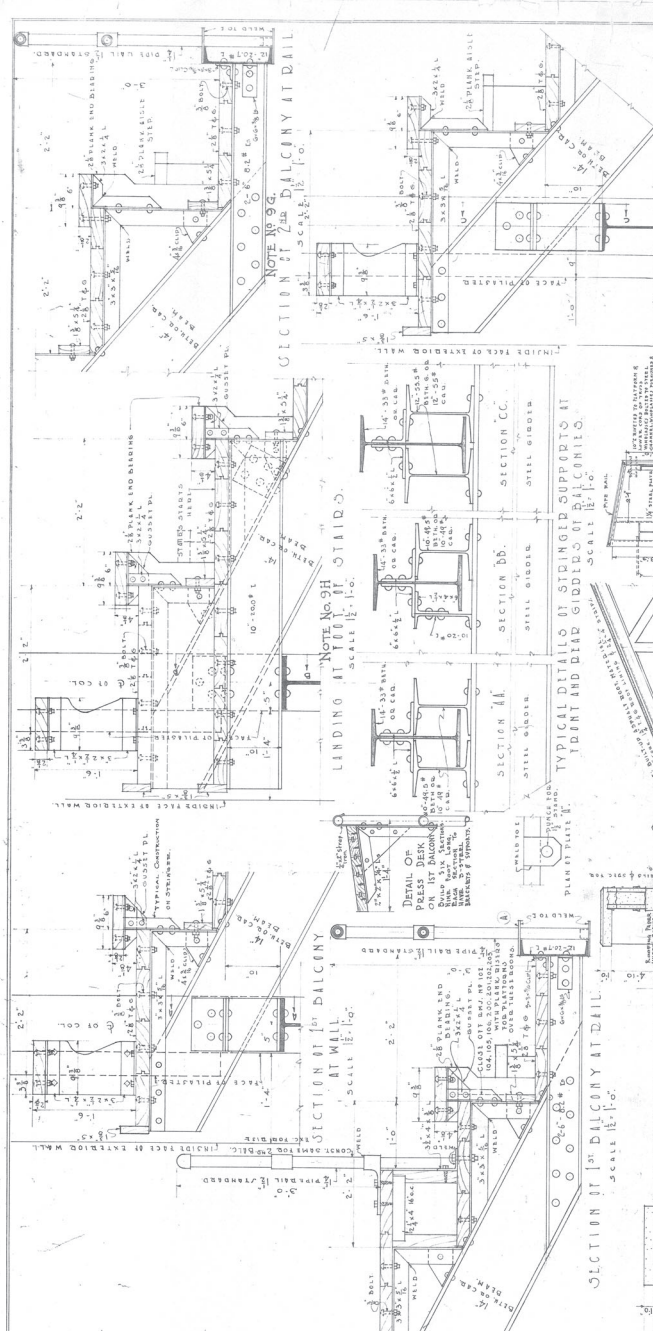
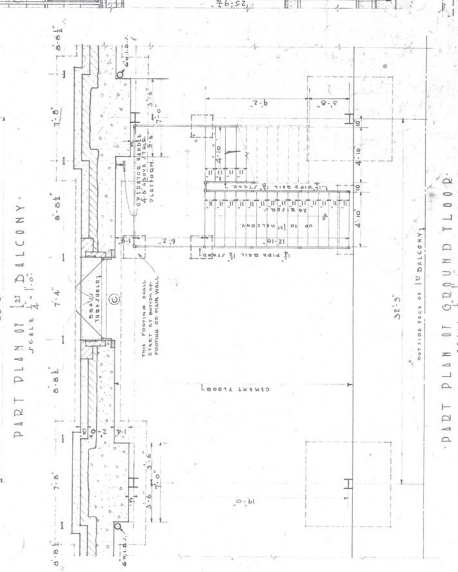
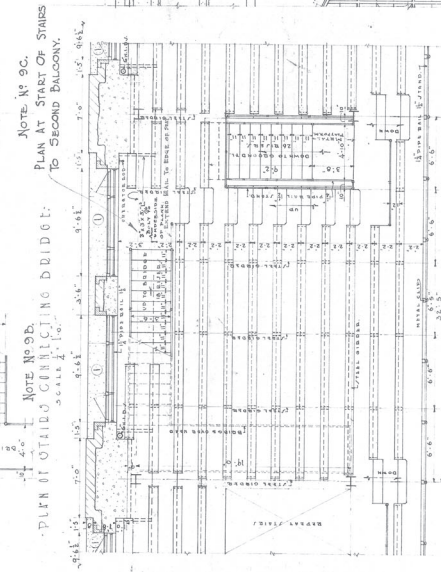
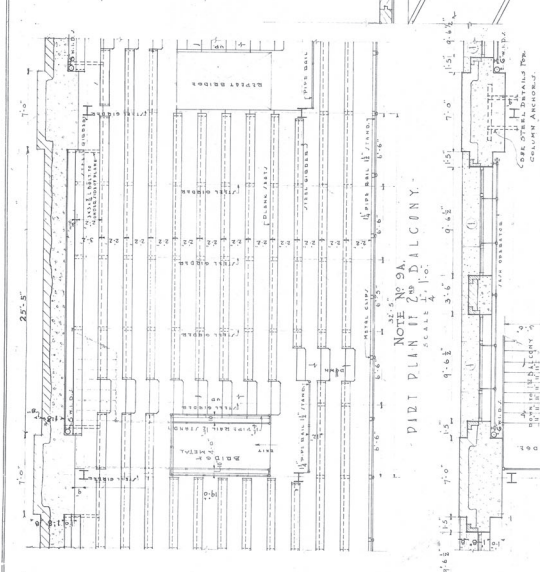
FIRST FLOOR PLAN



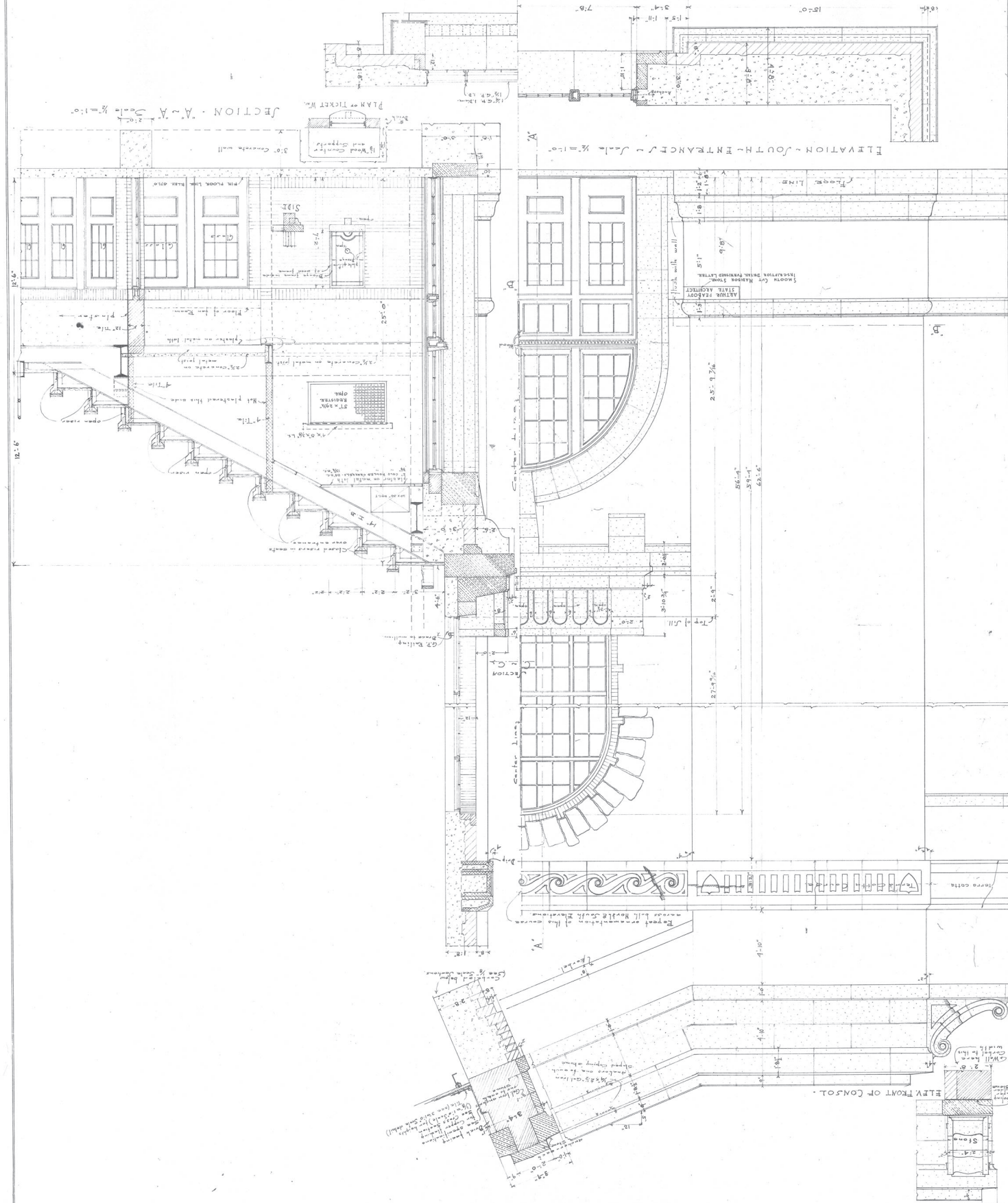
HALF PLAN OF SECOND BALCONY
 NOTE 8A
 EXTENT OF WORK ON THE CONSTRUCTION
 SECOND BALCONY
 OPPOSITE SIDE SIMILAR BUT REVERSED

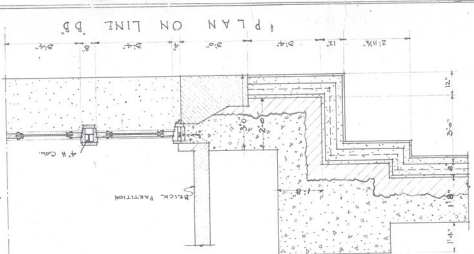
NOTE 8B
 BROADCASTING ROOM NOT IN
 CONTRACT FOR CONST. OF 2ND BALCONY

NOTE: DIMENSION FIGURES 19-22 FOLLOWED - NOT SCALE MEASUREMENTS

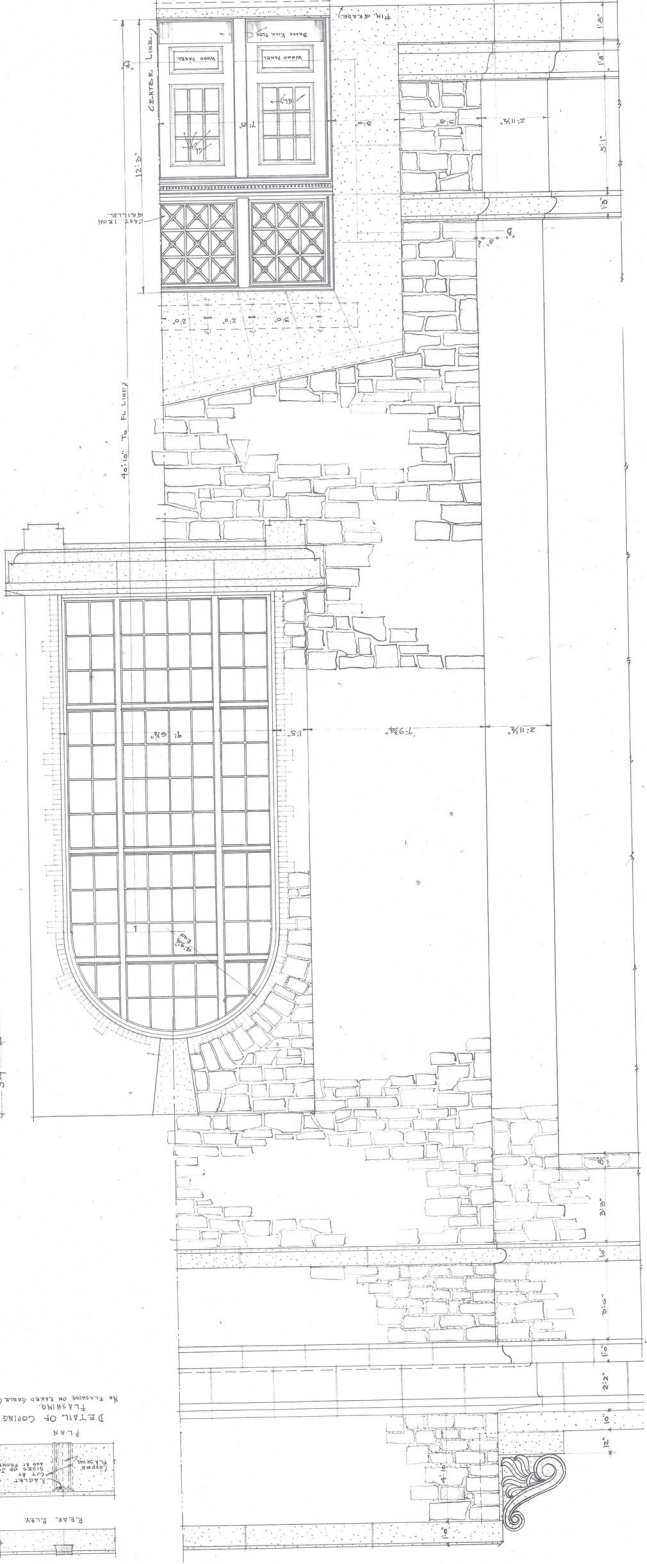


PLAN - SECT. D.B. Scale 1/8" = 1'-0"
 PLAN SECT. C.C. Scale 1/8" = 1'-0"
 NOT - FOLLOW DIMENSION FIGURES NOT SCALE MEASUREMENTS

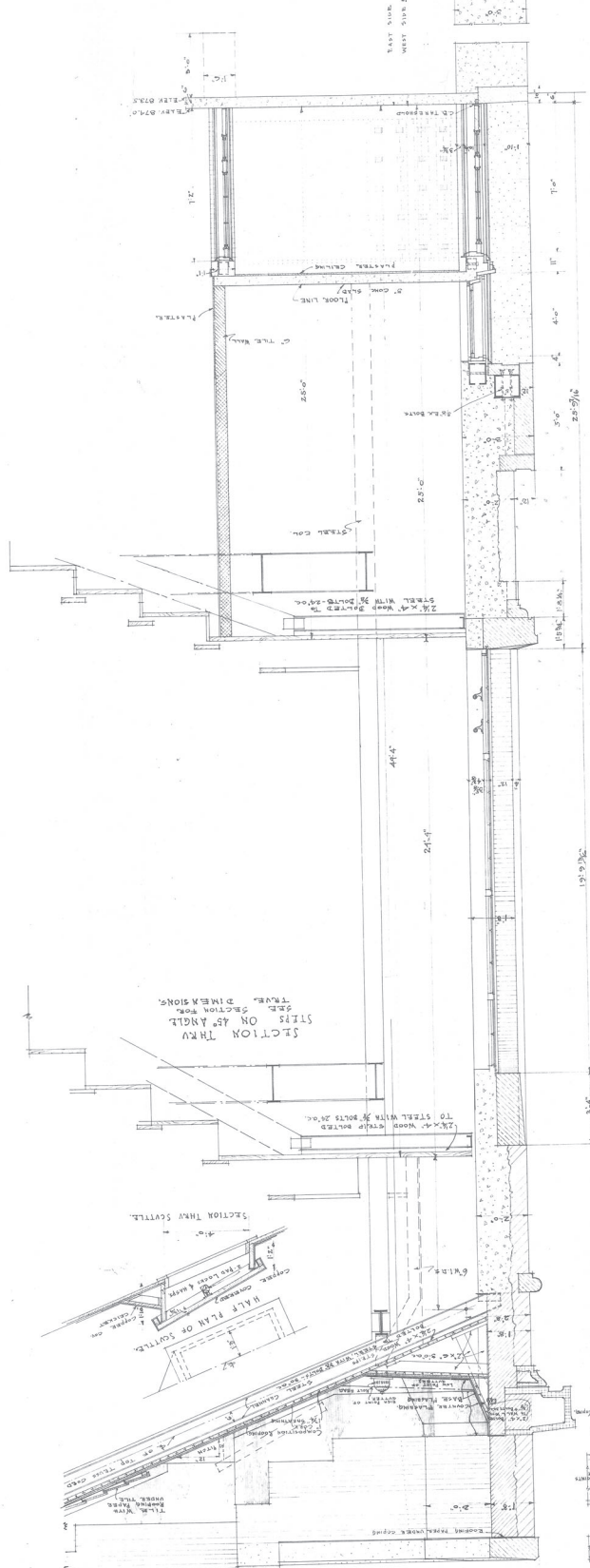




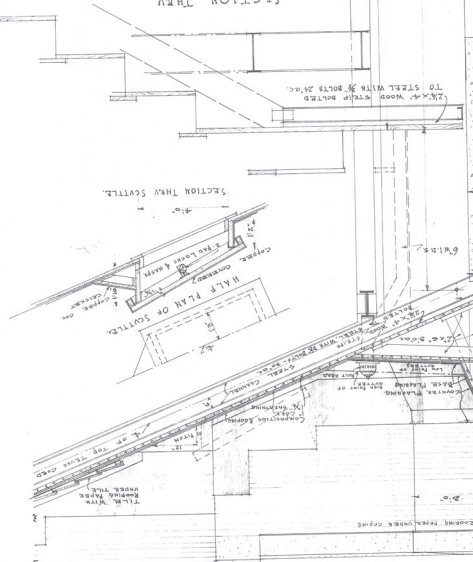
ELEVATION OF TYPE D DOORS



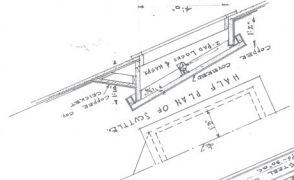
SECTION ON CENTER LINE



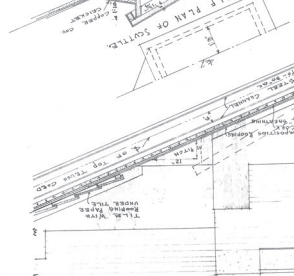
SECTION THRU SILL ON 45° ANGLE



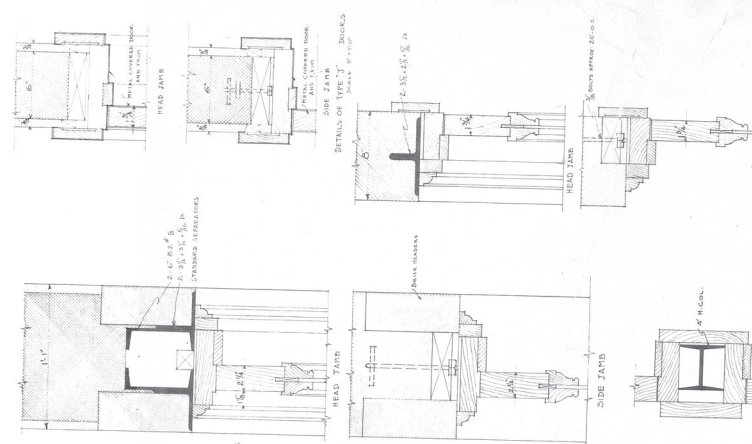
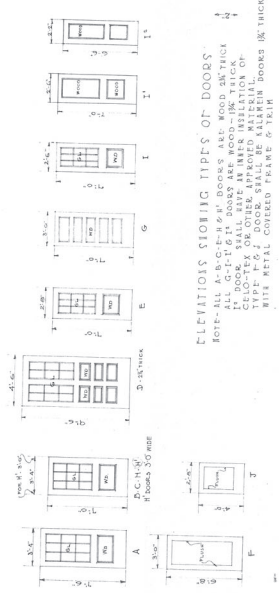
SECTION THRU SCUTTER



HALF PLAN OF SCUTTER

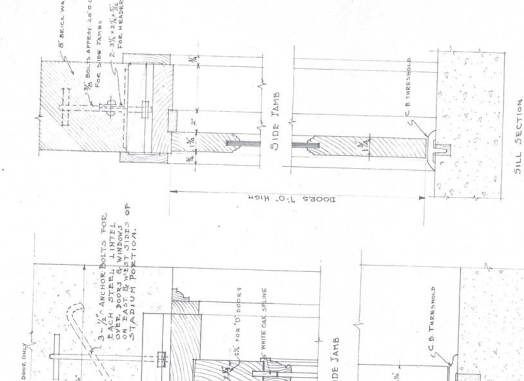
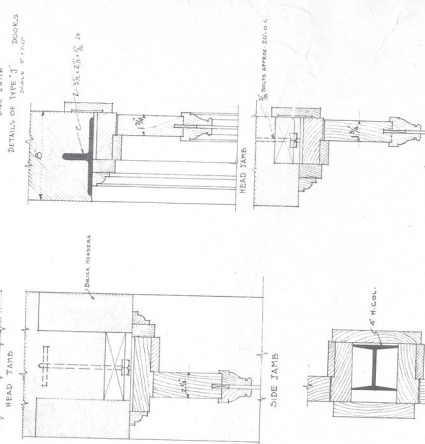


NOTE: FOLLOW DIMENSION FIGURES NOT SCALE MEASUREMENTS.



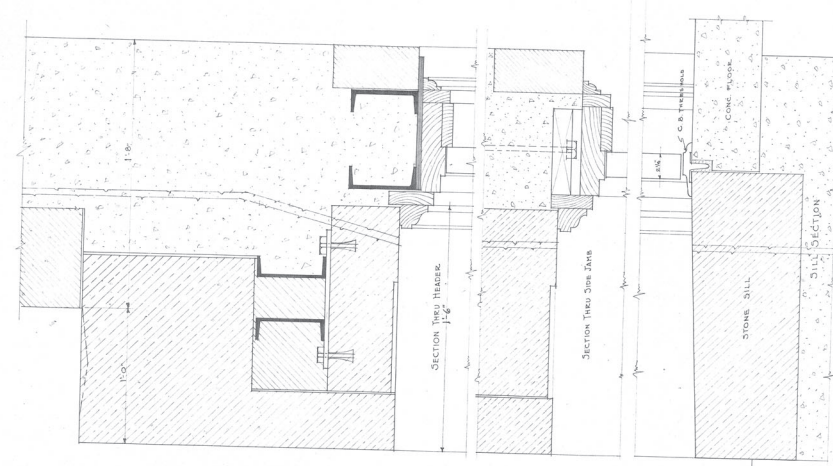
DETAILS OF TYPE 'T' DOORS
SCALE 3/4\"/>

DETAILS OF TYPE 'H' & 'W' DOORS
SCALE 3/4\"/>



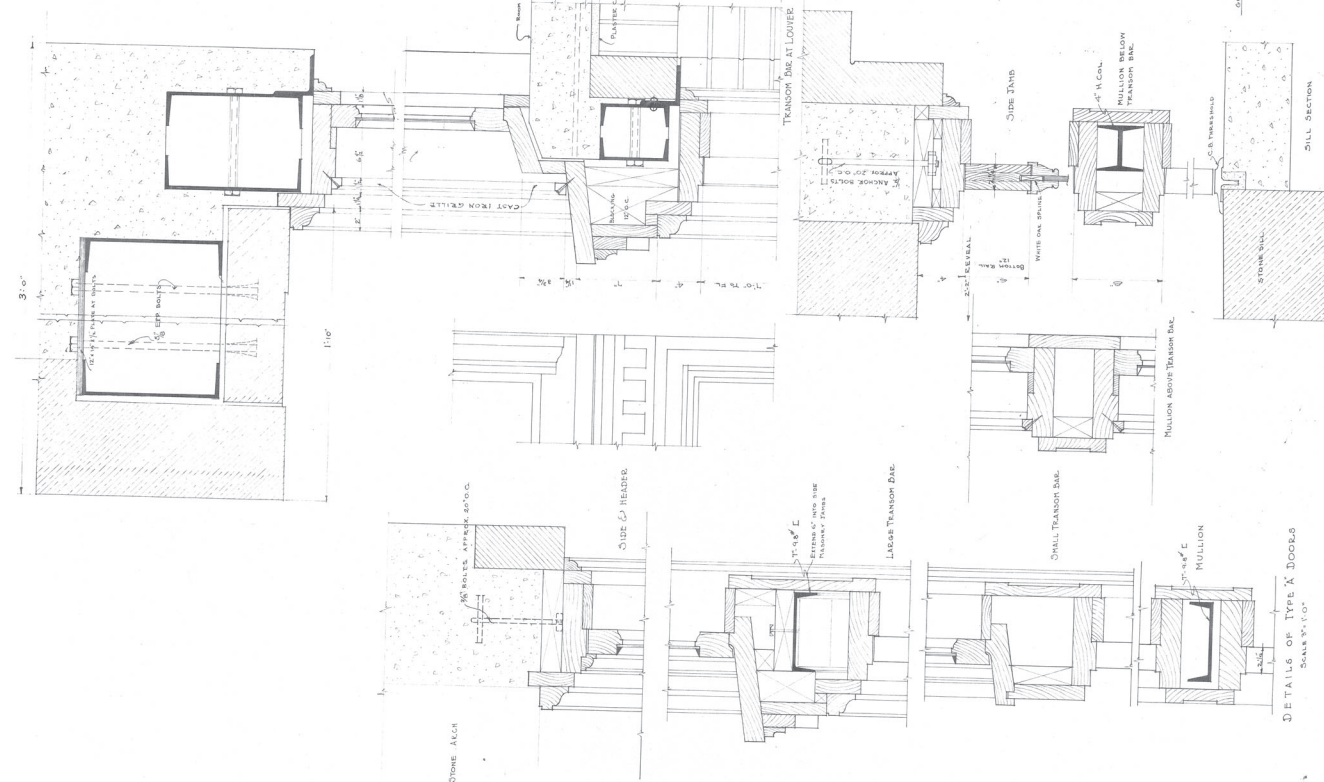
DETAILS OF TYPE 'C' DOORS
SCALE 3/4\"/>

DETAILS OF TYPE 'D' & 'E' DOORS
SCALE 3/4\"/>



DETAILS OF TYPE 'D' & 'E' DOORS
SCALE 3/4\"/>

DETAILS OF TYPE 'F' DOORS
SCALE 3/4\"/>

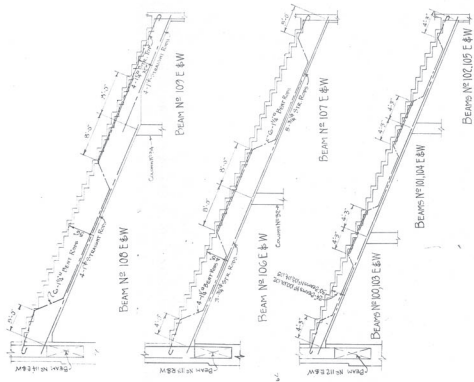


DETAILS OF TYPE 'F' DOORS
SCALE 3/4\"/>

DETAILS OF TYPE 'G' DOORS
SCALE 3/4\"/>

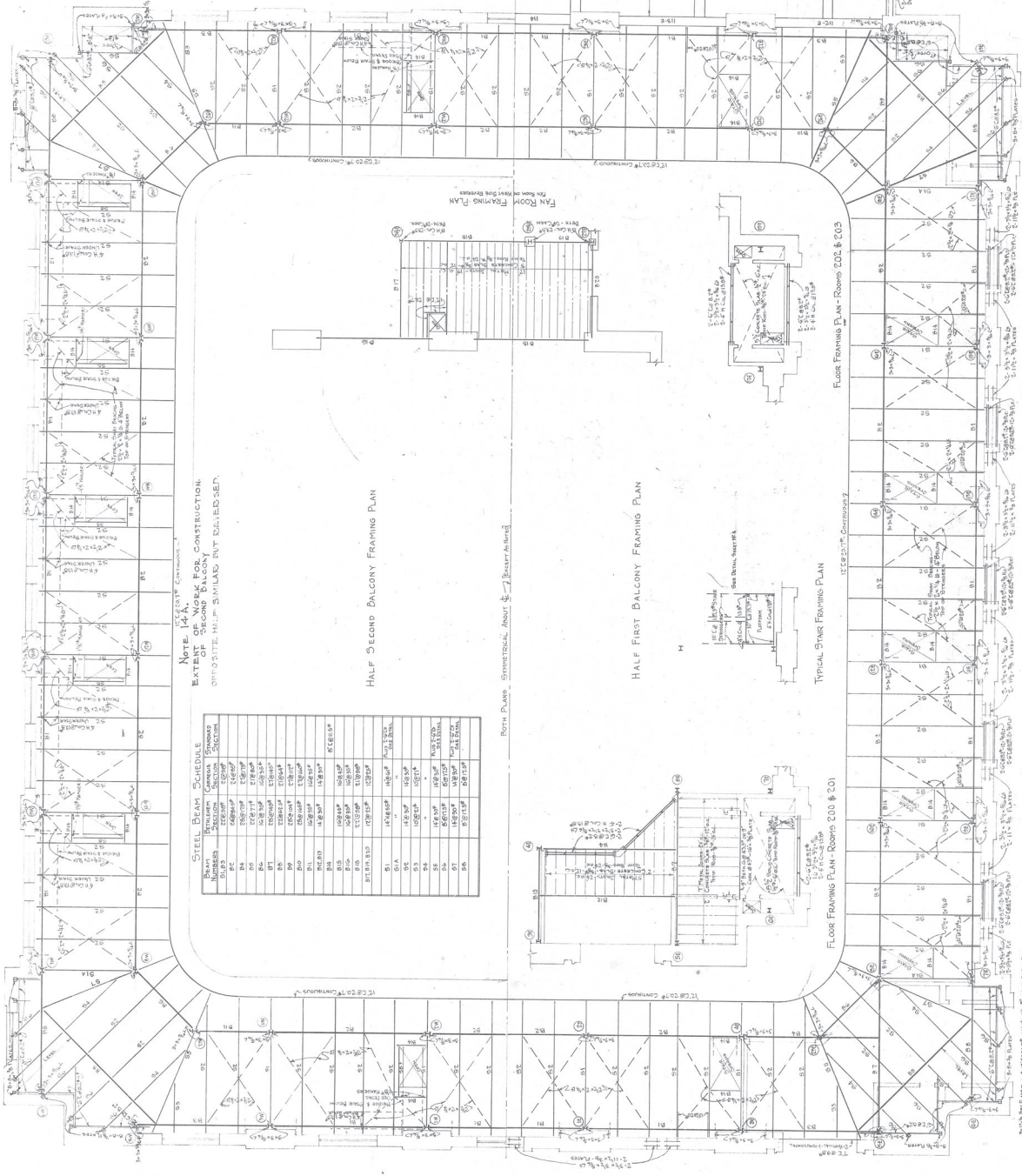
DETAILS OF TYPE 'H' DOORS
SCALE 3/4\"/>

DETAILS OF TYPE 'I' DOORS
SCALE 3/4\"/>



REINFORCEMENT OF BEAMS

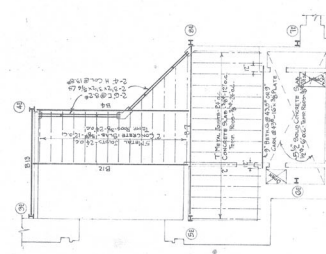
Beam	Reinforcement	Concrete	Reinforcement
BEAM NO. 100 E-W	4 #10	1500	1500
BEAM NO. 101 E-W	4 #10	1500	1500
BEAM NO. 102 E-W	4 #10	1500	1500
BEAM NO. 103 E-W	4 #10	1500	1500



NOTE: 1. ALL WORK FOR CONSTRUCTION OF FIRST FLOOR SHALL BE COMPLETED BEFORE THE START OF CONSTRUCTION OF SECOND FLOOR.

Beam	Reinforcement	Concrete	Reinforcement
BEAM NO. 100 E-W	4 #10	1500	1500
BEAM NO. 101 E-W	4 #10	1500	1500
BEAM NO. 102 E-W	4 #10	1500	1500
BEAM NO. 103 E-W	4 #10	1500	1500

Both Plans, Symmetrical About Centerline



HALF FIRST BALCONY FRAMING PLAN

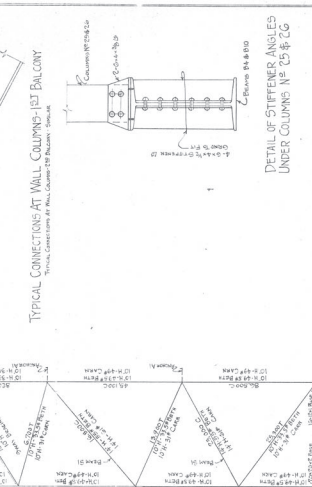
TYPICAL STAIR FRAMING PLAN

FLOOR FRAMING PLAN - ROOMS 202 & 203

FLOOR FRAMING PLAN - ROOMS 200 & 201

LINTEL OVER DOOR - 4 REIN

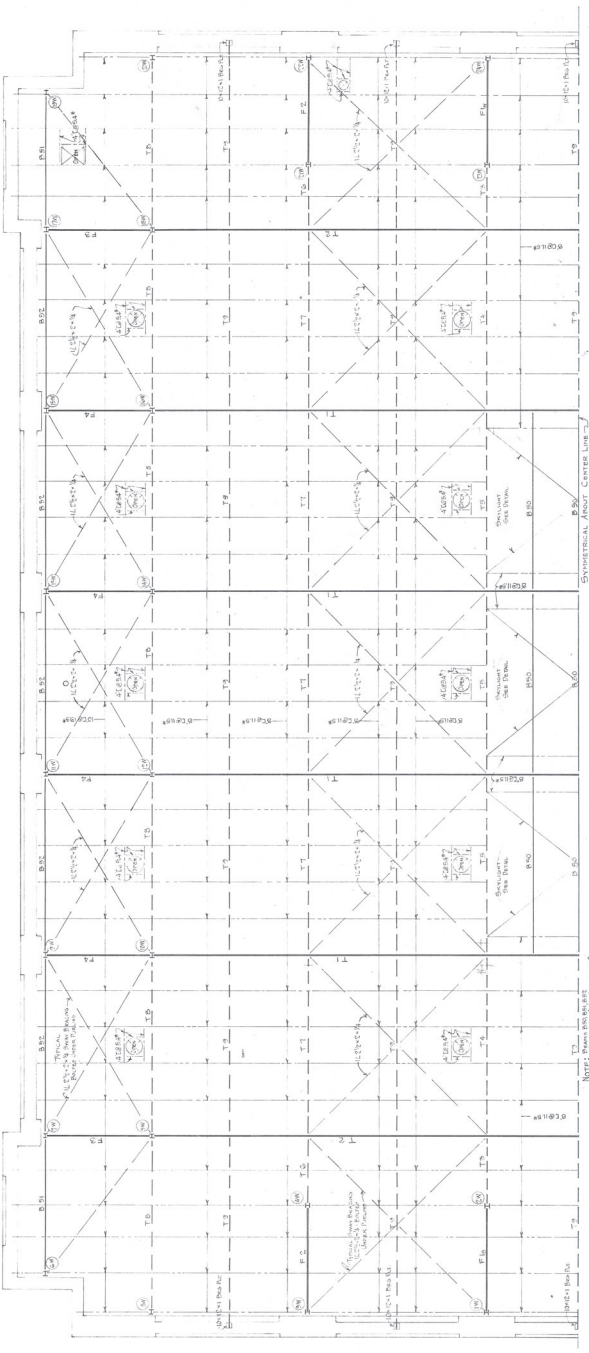
FIRST FLOOR FRAMING PLAN



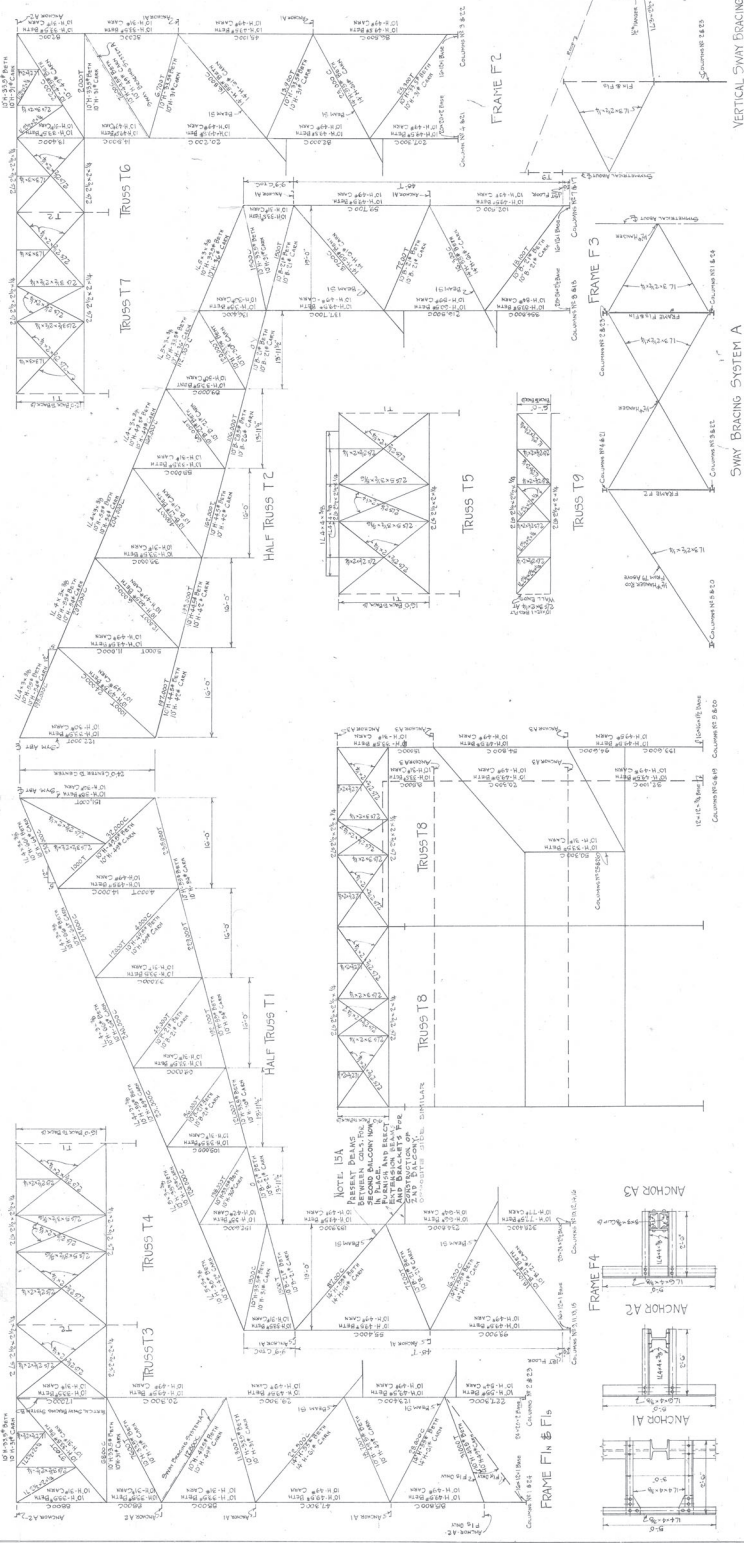
NOTE NO. 15-B.
TYPICAL BRACKET CONNECTION 2ND BALCONY

TYPICAL BRACKET CONNECTION 1ST BALCONY

TYPICAL CONNECTIONS AT WALL COLUMNS - 1ST BALCONY
TYPICAL CONNECTIONS AT WALL COLUMNS - 1ST BALCONY - CONTINUE

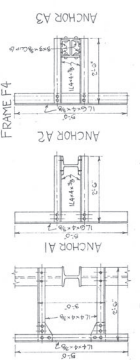


HALF ROOF FRAMING PLAN



SWAY BRACING SYSTEM A

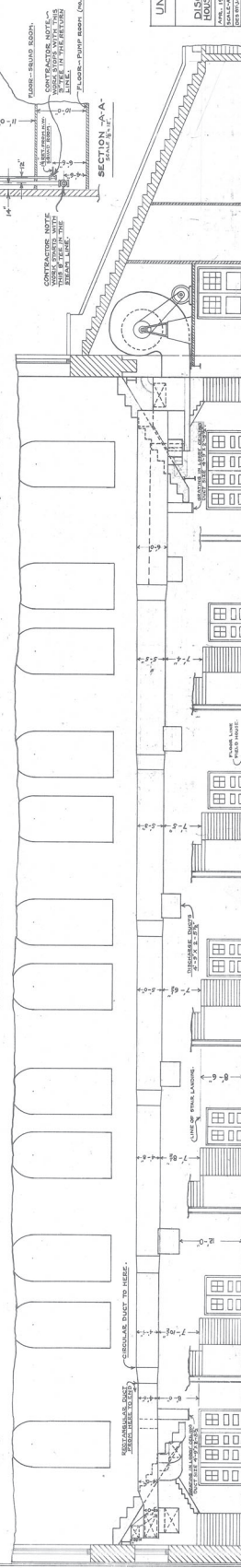
VERTICAL SWAY BRACING SYSTEM B



FRAME F4

24

AND

[illegible]

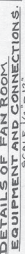
ALL DUCTS TO BE MADE OF GALVANIZED STEEL.

RECTANGULAR DUCT FROM HERE TO END

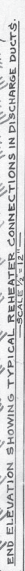
FIELD HOUSE
UNIVERSITY OF WISCONSIN
RAYNE PRABOY ARCHITECT

E-T LAYOUT SHOWS THE WEST FAN ROOM WITH CLOCKWISE ROTATION. CHARGE FAN TOGETHER WITH HEATER DANKERS DUCTS ETC. THE EAST FAN ROOM IS THE SAME BUT THE ROTATION IS COUNTERCLOCKWISE AND THE CONNECTIONS ARE REVERSED.

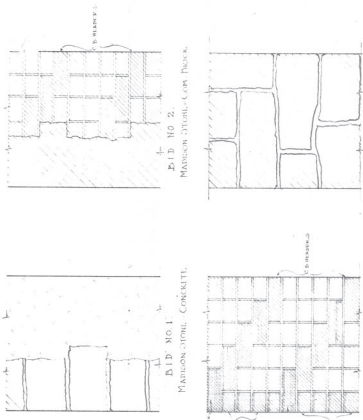
FAN TO HAVE A CAPACITY OF 60,000 C.U.F.T. OF AIR PER MIN. AT ABOUT 172 R.P.M.—1½" STATIC PRES. AND 1.5" TOTAL PRES. THE FAN MUST BE DESIGNED TO RUN AT A HIGH SPEED TYPE OF FAN. THE FAN MUST BE DESIGNED TO EXCEED 5700 F.T. PER MIN.



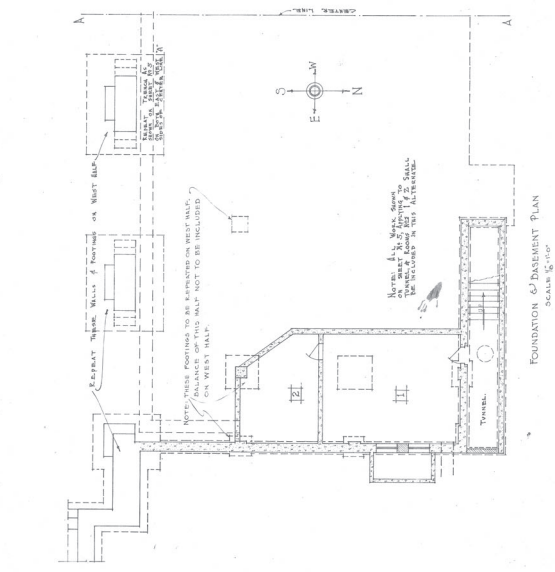
SECTION SHOWING HEATING ELEMENT AND EXHAUST SYSTEM



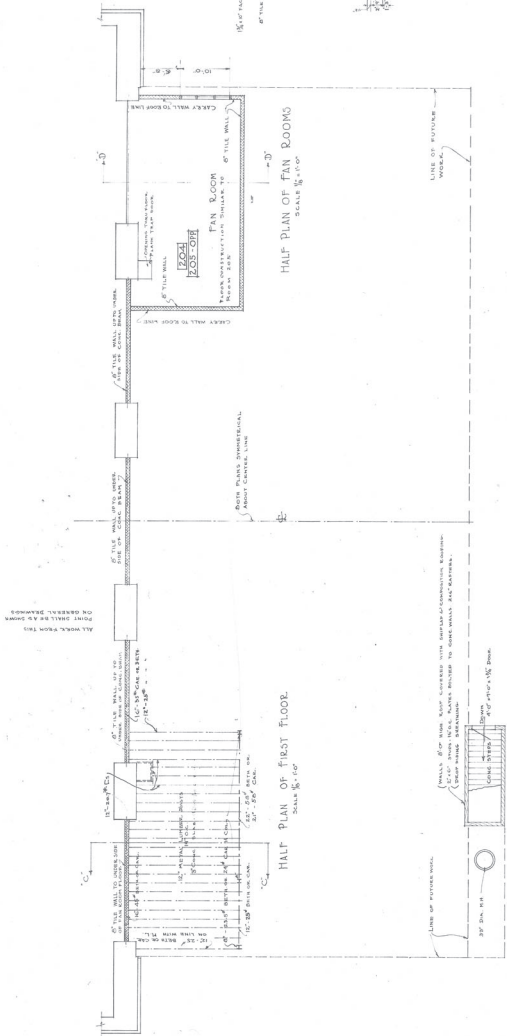
FIELD HOUSE
UNIVERSITY OF WISCONSIN
ARTS, PEABODY ARCHITECT



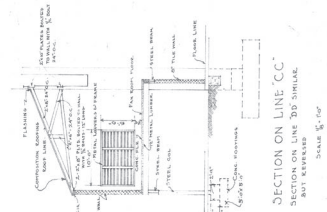
PLAN OF SECOND BALCONY
SHOWING AMOUNT OF STEEL TO BE FURNISHED UNDER DEDUCTION ALTERNATIVE "A"



FOUNDATION & BASEMENT PLAN
SCALE $\frac{1}{8}'' = 1'-0''$



PLAN OF FIRST FLOOR
SCALE 1/4" = 1'-0"



SECTION ON LINE "CC"

